

OCAD

Andreas Kyburz

OCAD Inc., Mühlegasse 36, CH-6340 Baar, +41-41-763 18 60, info@ocad.com, www.ocad.com

OCAD is the result of more than 30 years of software engineering. During this time, OCAD has evolved from an orienteering map drawing software to a powerful mapping solution that covers the entire map production workflow. In OCAD you draw maps that are georeferenced to a specific scale.



Cartographic workflow

- Use Existing Geo Data

Import geospatial data such as shapefiles, Geo-Packages and OSM or connect to Web Map Services. Organize and edit the vector data attributes using database tools.

- Capture Your Own Data

Enhance your map by capturing map features directly in the field with our OCAD Sketch App for mobile devices.

- Analyse LiDAR data

Derive hill shadings, contour lines, vegetation height maps, slope gradient and feature extraction within a single run.

- Create Your Own Map Symbols

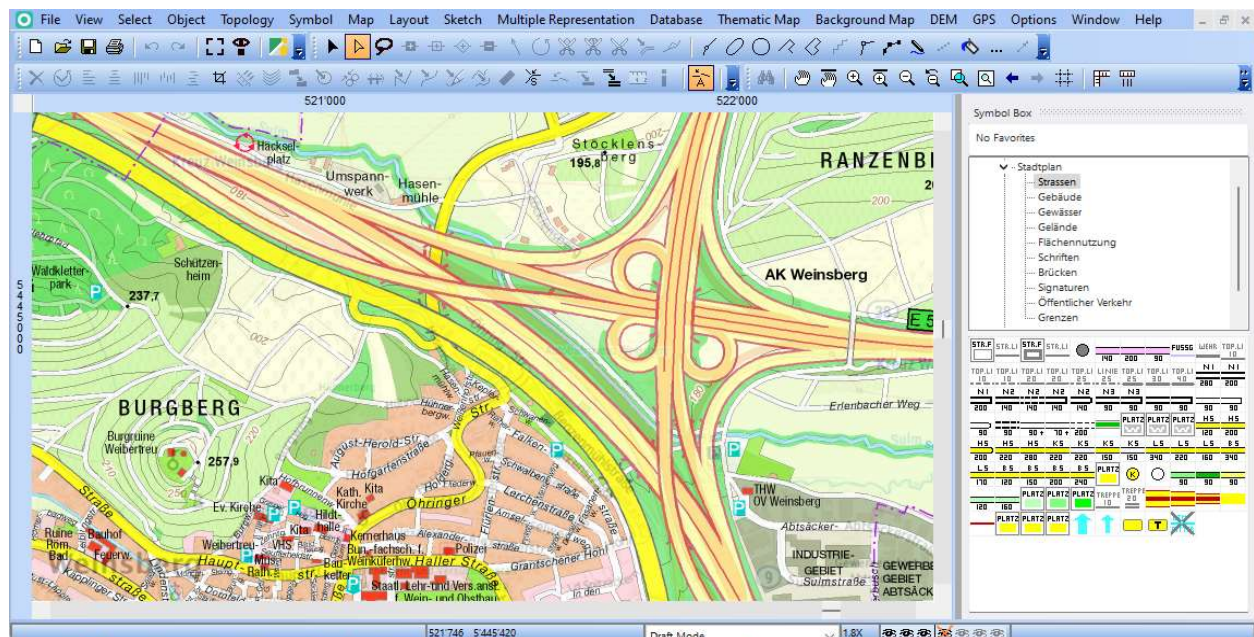
Assign your data to own created maps symbols. Use the unique drawing, editing and generalization tools to produce maps for the most demanding cartographic requirements.

- Print and Export Your Map

Finalize your map with a layout for printing or export for further digital use.

- Multiple Representation

Alter your map features in different representations without affecting your original map. However, if you change the original, the different representations will adopt these changes.



OCAD GUI.

Products and Services

The OCAD Mapping Solution combines all the functions to create city maps and topographic maps in one software. In addition to developing its software, OCAD Inc. offers its services for data migration and customization projects.



OCAD migrates and georeferences city maps.

OCAD Sketch App

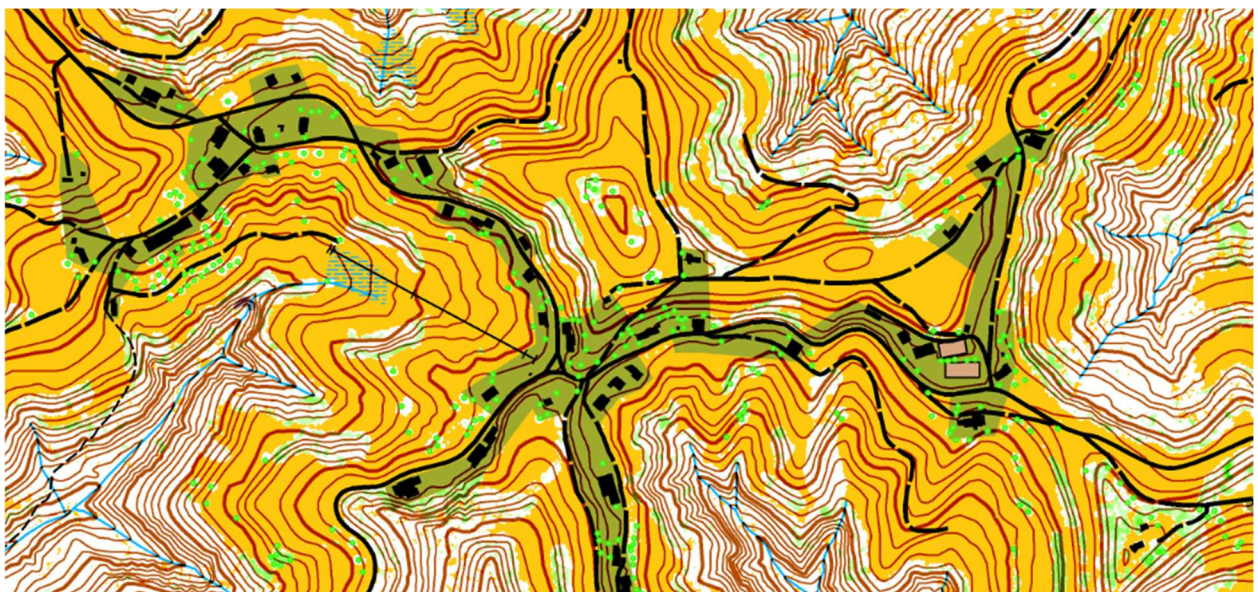
The newly developed OCAD Sketch App complements the desktop version of OCAD. It is designed for mapping in the field – both for new mapping and for revisions or feedback from map reviewers.



The OCAD Sketch App enables ergonomic and efficient mapping in the field.

MapAnt.ch

In order to show that OCAD can handle large amount of data volume, MapAnt.ch was created. It is an automatically generated map of Switzerland from free available geodata, such as swissALT13D, swissSURFACE3D and swissTLM3D and is the most accurate topographic map of Switzerland. Furthermore, it also shows vegetation. The elevation curves are automatically smoothed to account for the roughness of the terrain.



Map extract from <https://www.mapant.ch>